

ARTWORK APPROVAL FORM

ORDER DETAILS		ITEM DETAILS	
ORDER NUMBER:	X	FABRIC:	68% COTTON, 29% POLYESTER, 3% ELASTANE
ITEM CODE:	MWCS21	ITEM SIZE:	S/M (36-39)
QUANTITY:	X	RIGHT AND LEFT:	1 DESIGN / 2 DESIGNS
		SIZE INDICATION:	STICKER
		X:	X

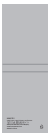
Maresbe



SCALE 1:10

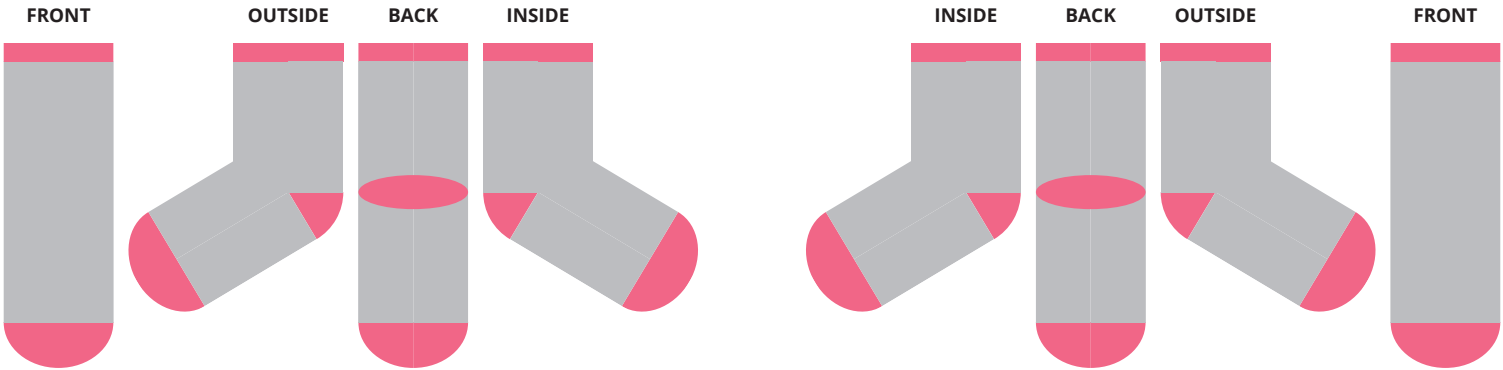
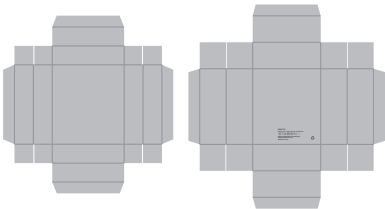
TAG
TECHNIQUE FULL COLOUR
LOGO CMYK
SIZE ALL OVER

ATTENTION 1



GIFT BOX LID & BASE
TECHNIQUE FULL COLOUR
LOGO CMYK
SIZE ALL OVER

ATTENTION 1



LEFT SOCK
TECHNIQUE JACQUARD
BASE -
LOGO -
SIZE ALL OVER

ATTENTION 1

RIGHT SOCK
JACQUARD TECHNIQUE
- BASE
- LOGO
ALL OVER SIZE

ATTENTION 1



GENERAL COMMENT:
DUE TO THE NATURE OF THE JACQUARD PRODUCTION PROCESS
THIS TECHNIQUE IS NOT SUITABLE FOR DESIGNS WITH FINE DETAILS.
THE DESIGN EDGES WILL APPEAR SERRATED
AND MAY NOT BE PERFECTLY ALIGNED.
ATTENTION 1:



GENERAL COMMENT:
DUE TO ELASTICITY OF FIBER, MEASUREMENT OF REAL SOCKS CAN BE SLIGHTLY DIFFERENT.



ATTENTION 2: